

ALE



SMARTER, SAFER, STRONGER

COMPANY PRESENTATION

About ALE

Founded in 1983

700 employees

Located in over 25 countries

Corporate head office - UK

Turn over €150 million



WORLDWIDE HEAVY TRANSPORTATION AND LIFTING

WWW.ALE-HEAVYLIFT.COM



SMARTER, SAFER, STRONGER

Global Reach



WORLDWIDE HEAVY TRANSPORTATION AND LIFTING

WWW.ALE-HEAVYLIFT.COM



SMARTER, SAFER, STRONGER

Why ALE



- Smarter:
ALE applies innovative and intelligent problem solving to devise bespoke solutions for very challenging, time-pressured projects
- Safer:
ALE is committed to assuming full responsibility for the safety and quality of its processes to keep risk to an absolute minimum
- Stronger:
ALE adapts to changing conditions and addresses new challenges by being agile, proactive and responsive at all times

HSQE

One of our core strengths is our commitment to responsible working practices and the importance we place in health, safety, quality and the environment.



663373



663298



663298



LRQ 4005965



LRQ 4005965



SGI 6005514

Health & Safety

ALE employees in every country and at every level are responsible for adhering to the guidelines of the Integrated Management System.



Quality

Our quality policy is to provide our services to a level of quality, cost, performance and reliability that exceeds customer requirements.



Environment

Our environmental policy is to conduct our global operations in compliance with all applicable environmental legislation and good practice.



Why ALE

- Ingenuity • Responsibility • Flexibility



WORLDWIDE HEAVY TRANSPORTATION AND LIFTING

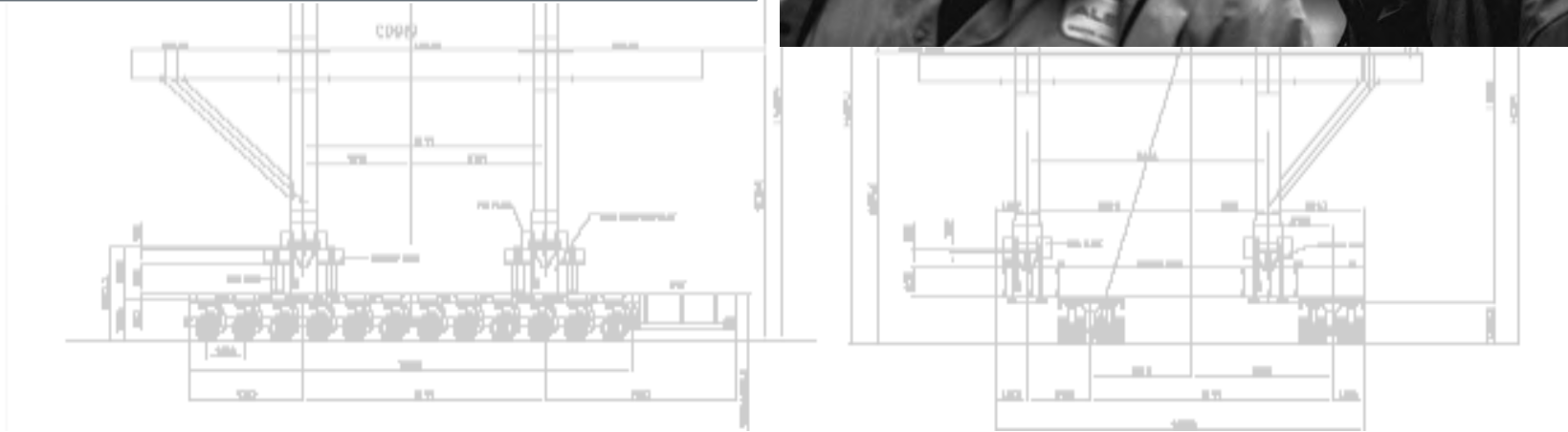
WWW.ALE-HEAVYLIFT.COM

ALE 
SMARTER, SAFER, STRONGER

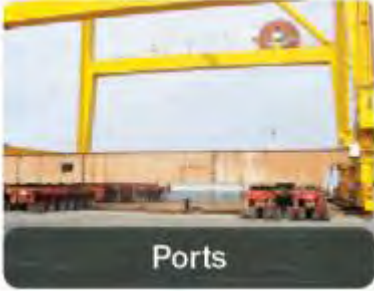
ALE Employees

ALE's employees are one of their main assets.

The detailed engineering, planning and management for each operation is undertaken by trained, highly experienced and dedicated personnel.



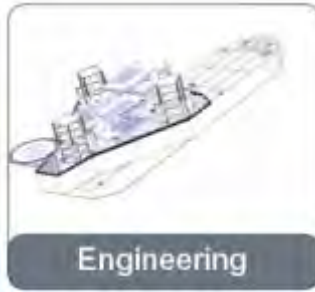
Sectors



Services



Ballasting



Engineering



Heavy Crane Lifting



Jacking



Lifting Systems



Load-in & Load-out



Logistics



Skidding



Transportation



Turnkey Projects



Weighing

Global Activities

ALE is a leading provider of worldwide land and marine heavy transportation and heavy lifting services offering an extensive range of specialist activities and equipment to industry.



- Transportation of heavy and abnormal loads over land & sea
- Load-out and load-in of offshore structures
- Installation of heavy equipment using skidding and lifting systems
- Modular tower and gantry systems
- Computer controlled strand jack systems for lifting and pulling
- Jacking and weighing
- Heavy-lift cranes
- Turnkey projects
- Feasibility studies & consultancy
- Ballasting & mooring operations
- Engineering services and CAD based design

Equipment



Equipment - Cranes

- 1 x CC8800-1 - 1,600te Capacity
- 1 x MK1500 - 1,500te Capacity
- 1 x CC6800 - 1,200te Capacity
- 1 x AK912-1 - 1,200te Capacity
- 1 x LR1800 - 1,200te Capacity
- 6 x CC2800's - 600te Capacity
- 1 x CC2600 - 500te Capacity
- 4 x CC2400 - 440te Capacity
- 3 x CC2000 - 300te Capacity



Equipment - Cranes



Equipment - Cranes



World Largest Crane

5,000te Lifting Capacity



WORLDWIDE HEAVY TRANSPORTATION AND LIFTING

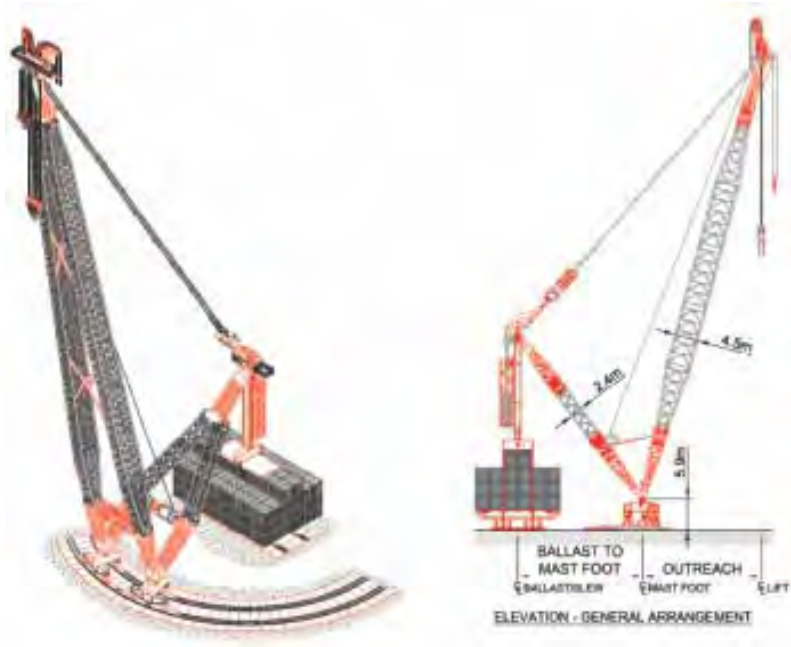
WWW.ALE-HEAVYLIFT.COM



SMARTER, SAFER, STRONGER

Equipment – Multi-Purpose Lifting Machines

We are proud to have introduced the world's highest-capacity land-based crane, the AL.SK190. The forthcoming AL.SK350 – with a lifting capacity more than double the load moment of its closest rival – will further expand this innovative fleet.



Equipment - Transportation

➤ Conventional Trailers	610 Axle Lines
➤ SPMT	1,000+ Axle Lines
➤ SPT	220 Axle Lines
Total	1,750 Axle Lines



Equipment - Transporters

Self Propelled Modular Transporters



WORLDWIDE HEAVY TRANSPORTATION AND LIFTING

WWW.ALE-HEAVYLIFT.COM



SMARTER, SAFER, STRONGER

Equipment - Transporters

Girder Frame Transporters



WORLDWIDE HEAVY TRANSPORTATION AND LIFTING

WWW.ALE-HEAVYLIFT.COM



SMARTER, SAFER, STRONGER

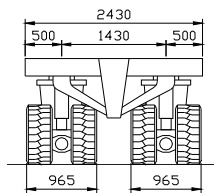
Equipment - Transporters

Self Propelled Modular Transporters

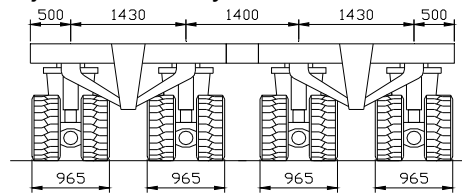
Key features

- 360 degree electronic steering.
- Hydraulically driven for movement in any direction.
- Multi-axle, high torque drive units, maximising the tractive effort.
- 25 or 50 per cent of all axles driven.
- Multi power modules capable of being interlinked.
- Advanced coupling systems to reduce rigging time.
- In cab or remote control option.
- Single point control for multi transporter operation.
- 3, 4 or multi suspension capability.

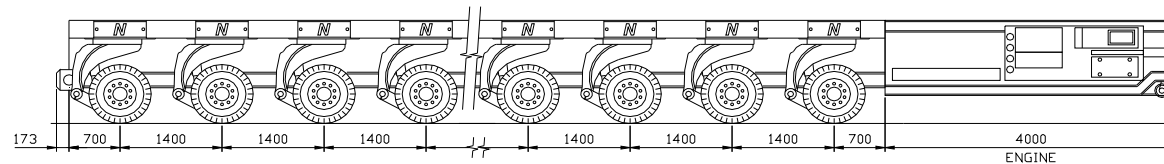
Examples of Typical End Elevations
Combinations may be joined side by side



2- File Unit
Carrying Capacity = 32 Te/Axle



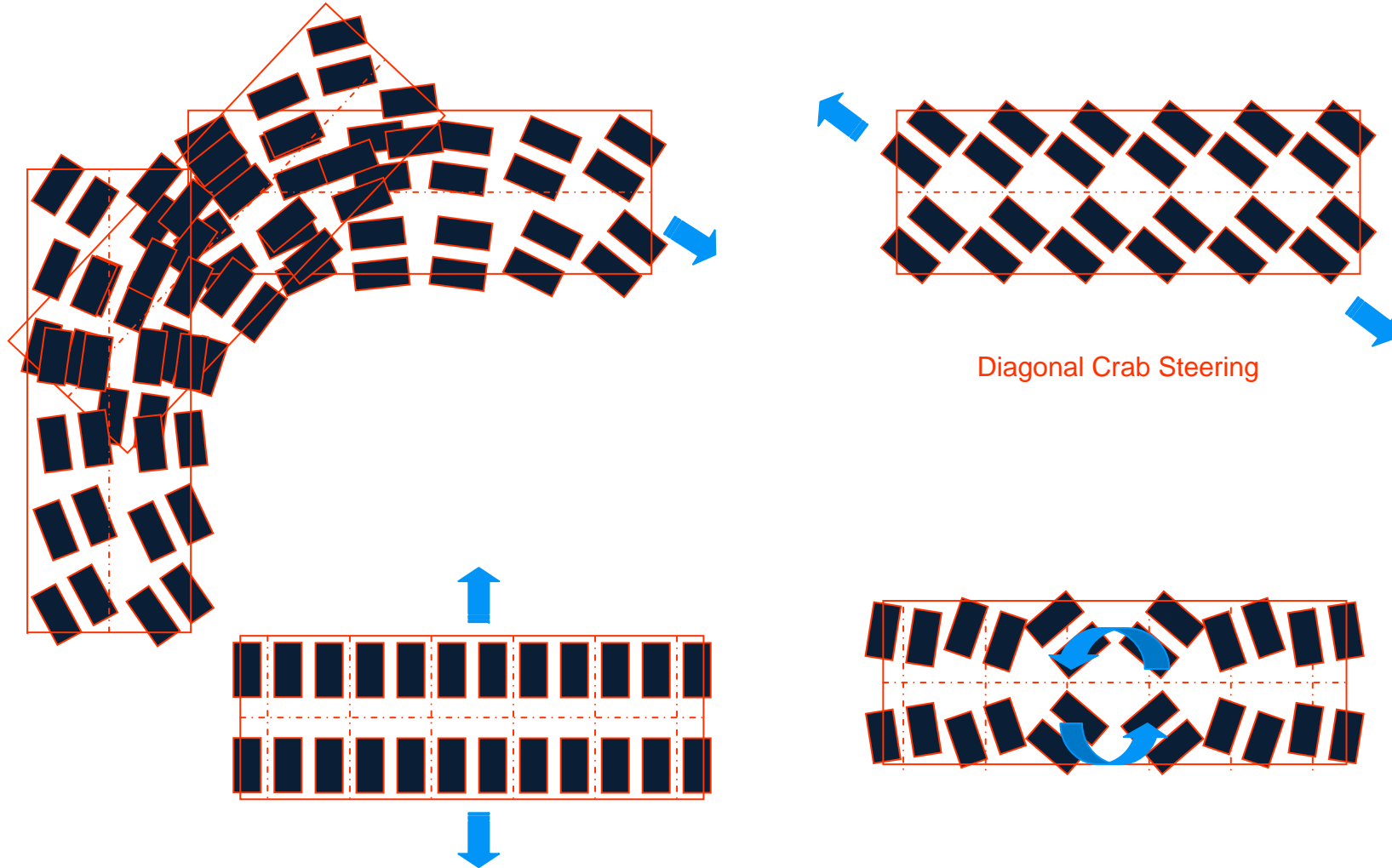
4- File Unit
Carrying Capacity = 64 Te/Axle



Side Elevation
Transporter configurations made up using multiples of 4 & 6 axle standard modules



Equipment – SPMT's



Diagonal Crab Steering

Equipment – Gantry Systems

➤ Gantries

- Gantry with Strand Jacks

18,500Te Capacity

- Gantry Hydraulic 4 point lifting

800Te Capacity



Gantry Systems



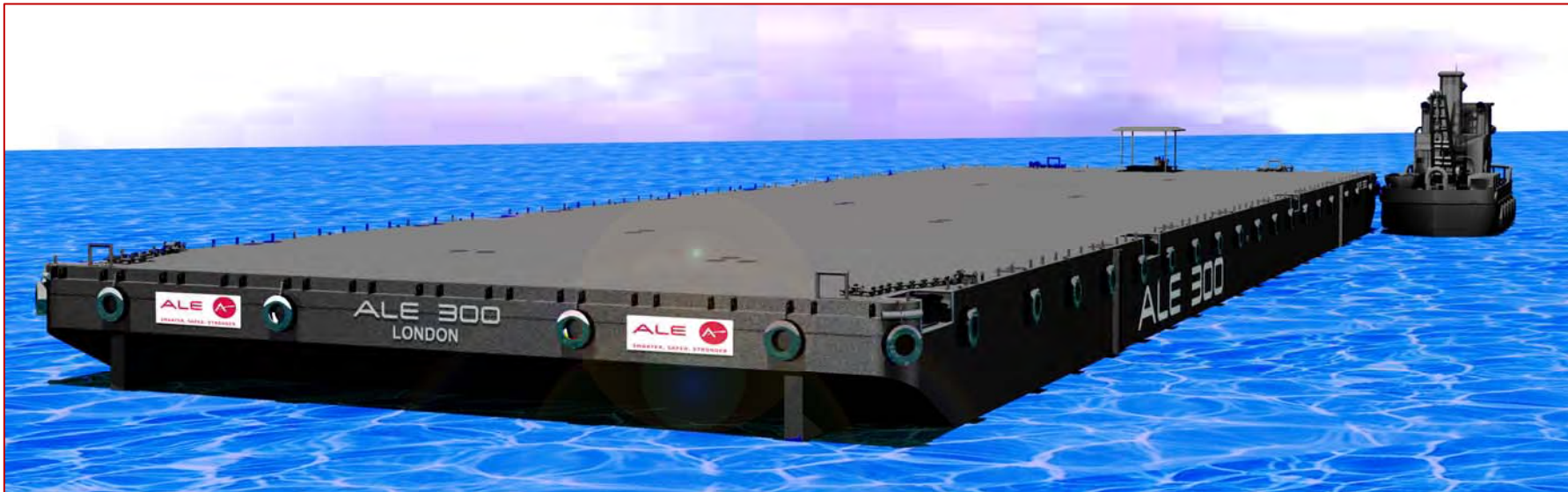
WORLDWIDE HEAVY TRANSPORTATION AND LIFTING

WWW.ALE-HEAVYLIFT.COM



SMARTER, SAFER, STRONGER

Equipment Resource - Barges



WORLDWIDE HEAVY TRANSPORTATION AND LIFTING

WWW.ALE-HEAVYLIFT.COM



Equipment – Strand Jack System

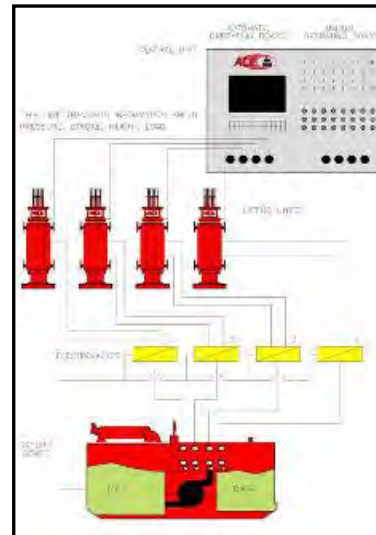
➤ Strand Jacks

- 15Te to 1250Te Capacity per unit



Main Components:

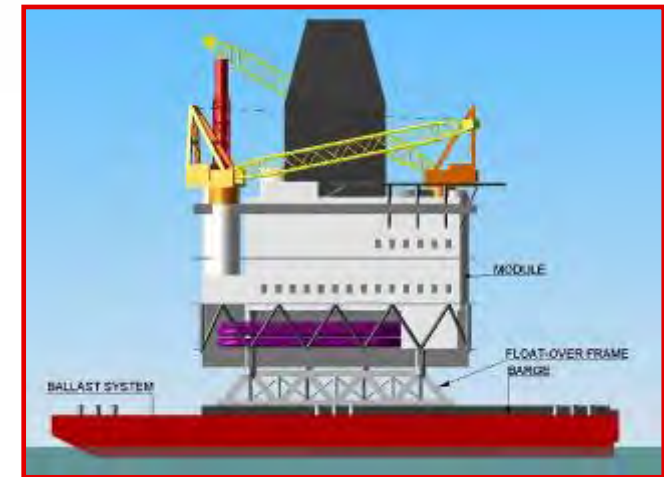
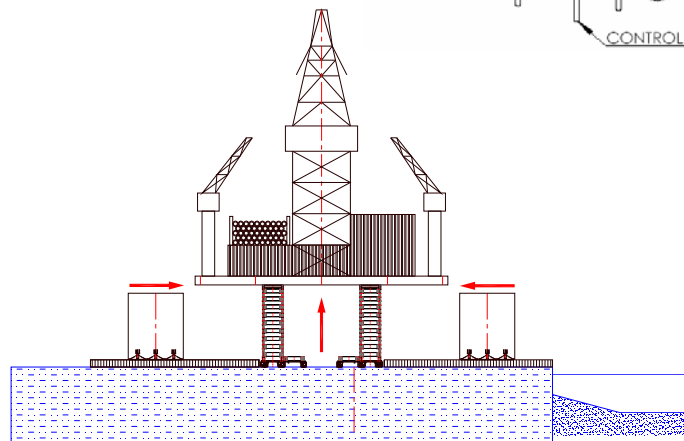
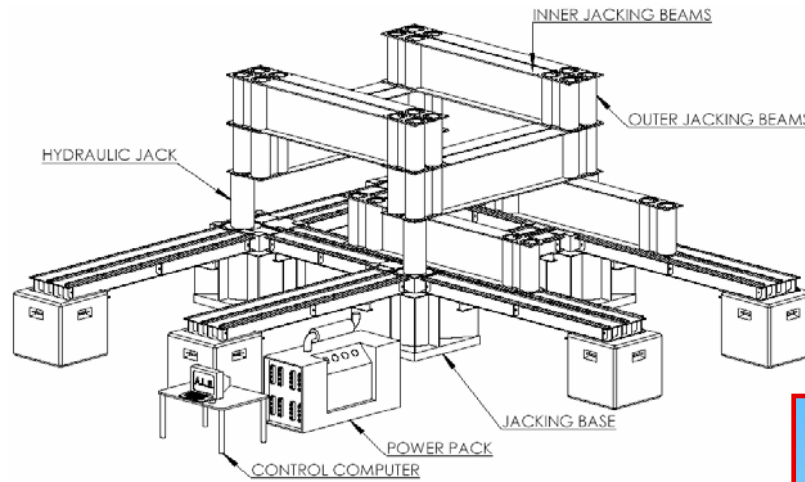
- Strand jack
- Strand wire
- Power pack
- Manifold box
- Control computer



Equipment – Mega Jack System

➤ Mega Jack

The base system consists of 8 jacking towers each with a capacity of 5,000 tonnes.



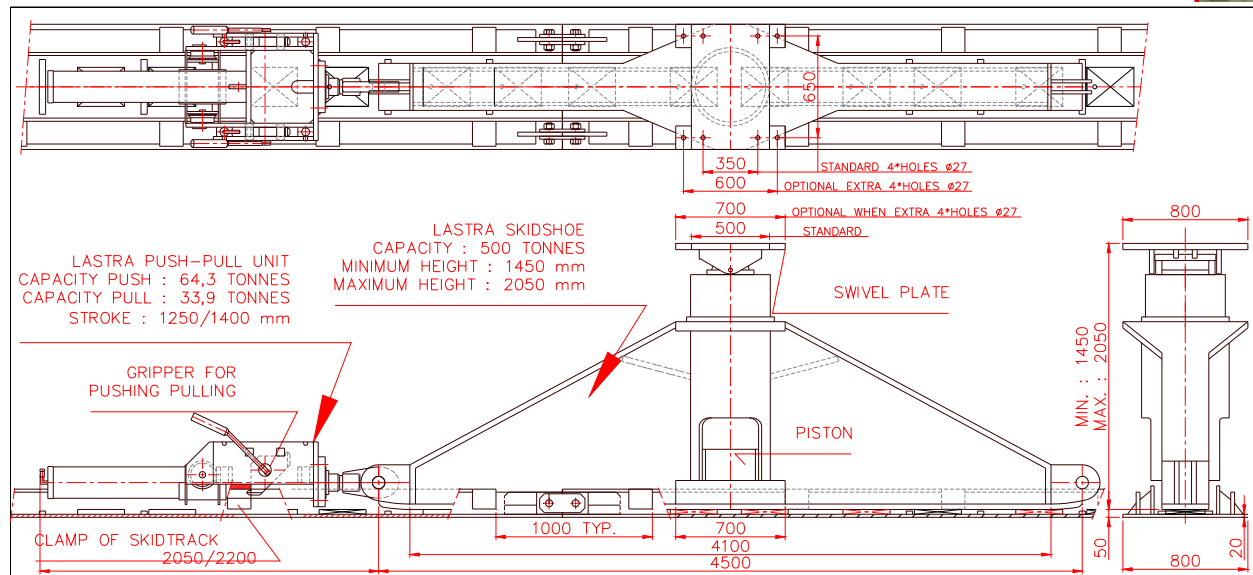
Equipment – Skidding System

➤ Skid Shoes

Skid Shoes up to 1,000Te Capacity 25,000Te

The ALE skid systems create a unique solution for the movement of high point loads/concentrated loads.

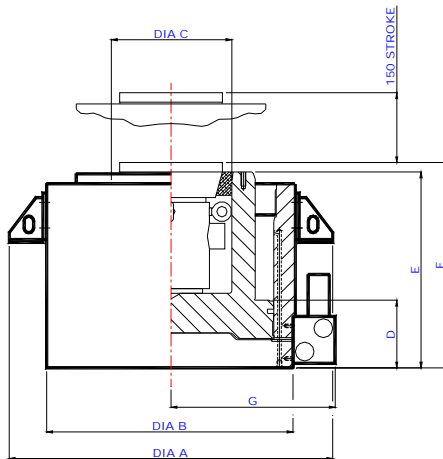
A combination of a number of skid shoes creates a flexible system to move complicated and heavy loads.



Equipment – Jacking and Weighing

➤ High Capacity Jacking & Weighing

- Weighing capacity up to 30,000te.
- Hydraulic jacks, compete with load cells, with synchronisation to 3mm and accuracy of 0.5% full range output.
- Comprehensive collection of heavy lift hydraulic ram jacks and load cell transducers.
- All equipment is calibrated to BSEN ISO 7500-1999.



Equipment – High Capacity Ballasting



WORLDWIDE HEAVY TRANSPORTATION AND LIFTING

WWW.ALE-HEAVYLIFT.COM

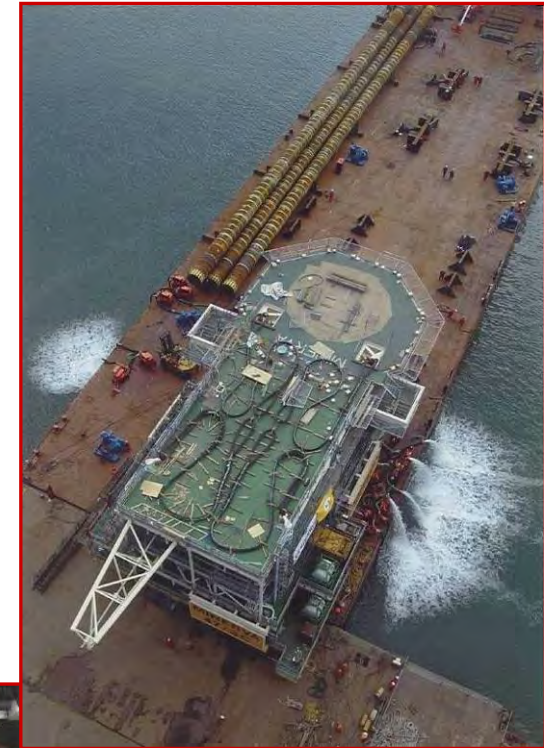


SMARTER, SAFER, STRONGER

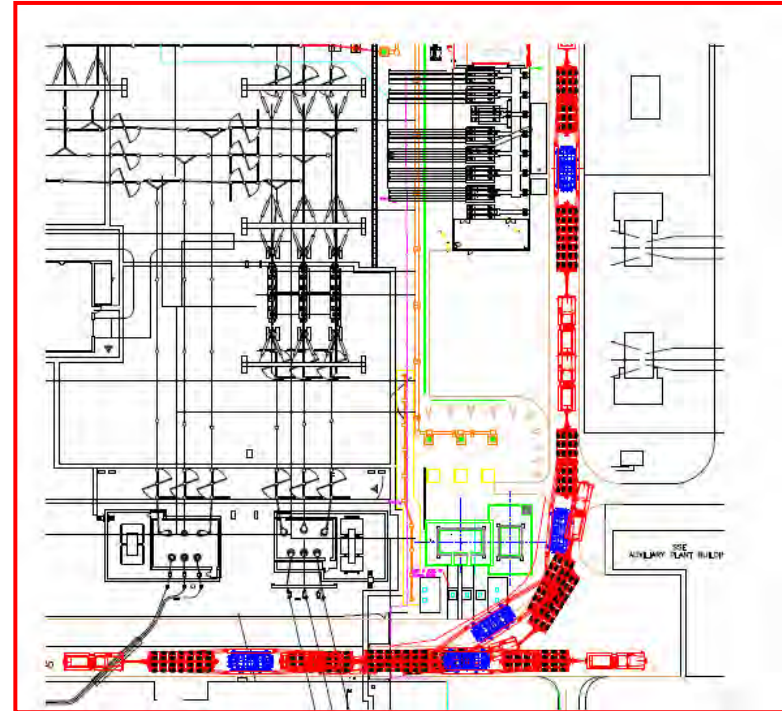
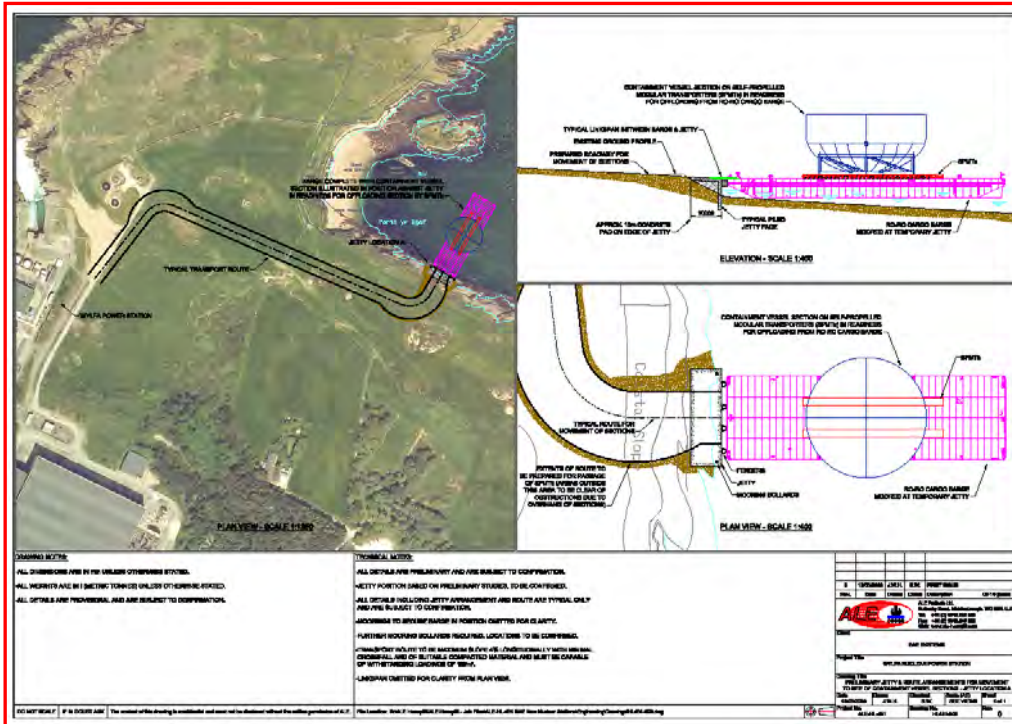
Equipment – Ballasting

➤ Ballasting

- Hydraulically driven, high capacity, submersible pumps
- Self-contained, diesel driven power packs
- Flow distribution and control elements
- Central control and monitoring system
- Engineering and barge survey



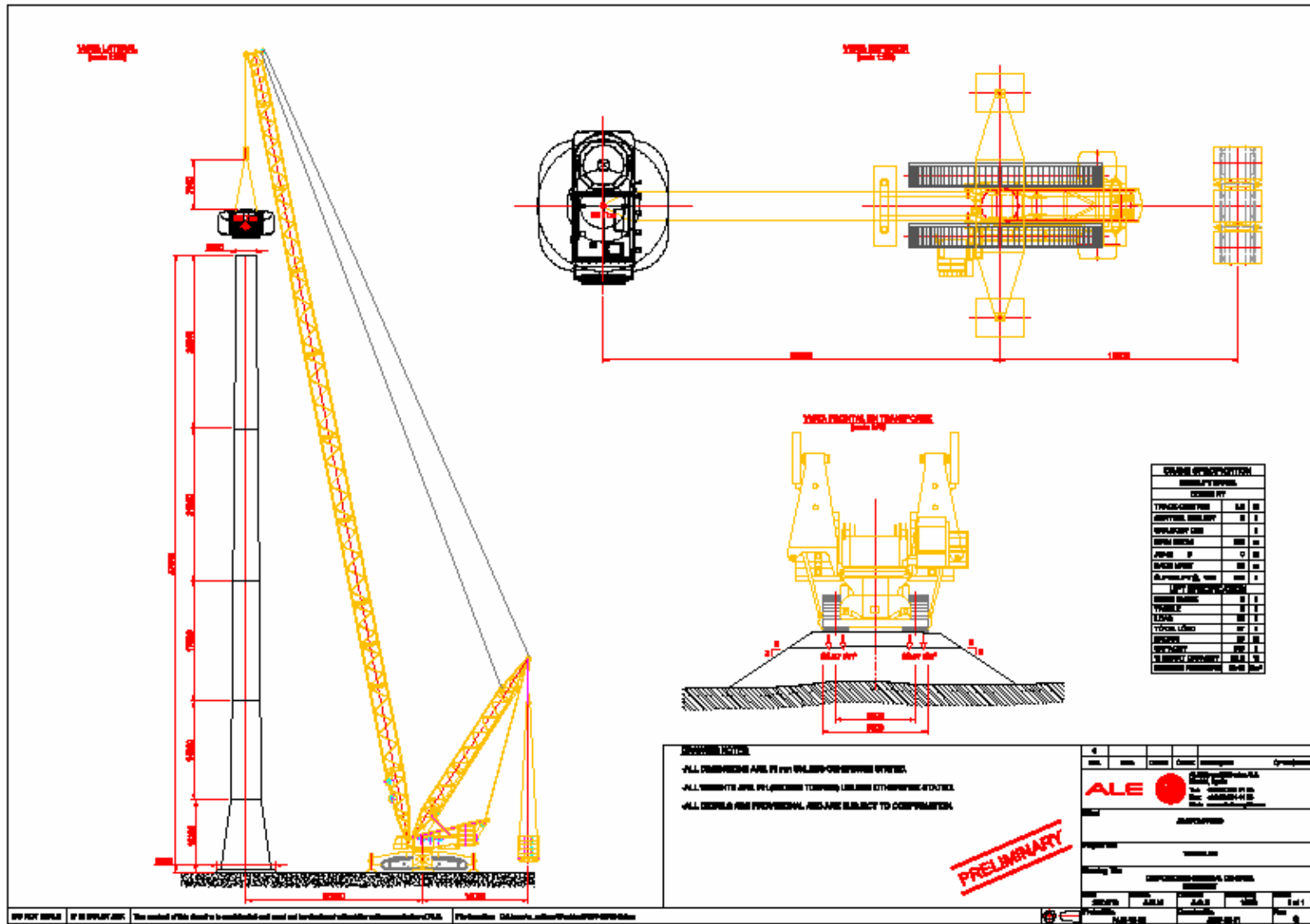
Feasibility Studies



ALE works with clients to offer a bespoke technical & commercial services.

These include full level risk investigations for feed and feasibility solutions including: delivery strategies, modularisation, specialist lifting & installation, infrastructure design & construction, marine studies, etc.

Feasibility Studies



WORLDWIDE HEAVY TRANSPORTATION AND LIFTING

WWW.ALE-HEAVYLIFT.COM



SMARTER, SAFER, STRONGER