

**ALE**



**SMARTER, SAFER, STRONGER**

**BRIEF DESCRIPTION OF SOME JOBS  
EXECUTED IN LATIN AMERICA**

# OFFICES & YARDS IN LATIN AMERICA

- ALE HAS A STRONG PRESENCE IN THE LATIN AMERICAN REGION

- THE PERSONNEL IN THIS PART OF THE WORLD ARE TRAINED TO FULFILL THE SAME SAFETY, QUALITY & ENGINEERING STANDARDS AS THE OTHER OFFICES OF THE ALE GROUP

- BESIDES THE LATIN AMERICAN OWN RESOURCES, ALE COUNTS WITH THE PERSONNEL, EQUIPMENT & SUPPORT OF THE OTHER BRANCHES IN THE WORLD



# ARGENTINA

- Transport and installation of 463t reactor
- Year: 2011
- Location: La Plata Refinery Complex



# PERU

- Road transport and installation of 430t reactor
- Year: 2011
- Location: Camisea Project



WORLDWIDE HEAVY TRANSPORTATION AND LIFTING

[WWW.ALE-HEAVYLIFT.COM](http://WWW.ALE-HEAVYLIFT.COM)

**ALE**   
SMARTER, SAFER, STRONGER

# BRAZIL



- Transport of vessels
- Year: 2003
- LOCATION: Rio Polímeros Gas Chemical Complex (Rio de Janeiro)

WORLDWIDE HEAVY TRANSPORTATION AND LIFTING

[WWW.ALE-HEAVYLIFT.COM](http://WWW.ALE-HEAVYLIFT.COM)

ALE   
SMARTER, SAFER, STRONGER

# BRAZIL

- Transport of vessels
- Year: 2003
- Location: Rio Polímeros Gas Chemical Complex (Rio de Janeiro)



# BRAZIL



- Transport of pannels project PRA-1
- Year: 2005
- Location: São Roque



WORLDWIDE HEAVY TRANSPORTATION AND LIFTING

[WWW.ALE-HEAVYLIFT.COM](http://WWW.ALE-HEAVYLIFT.COM)

**ALE**   
SMARTER, SAFER, STRONGER

# BRAZIL



- Transport and load-out blocks of the Lower-Hull of Platform P51
- Year: 2006
- Location: Itaguaí - Angra



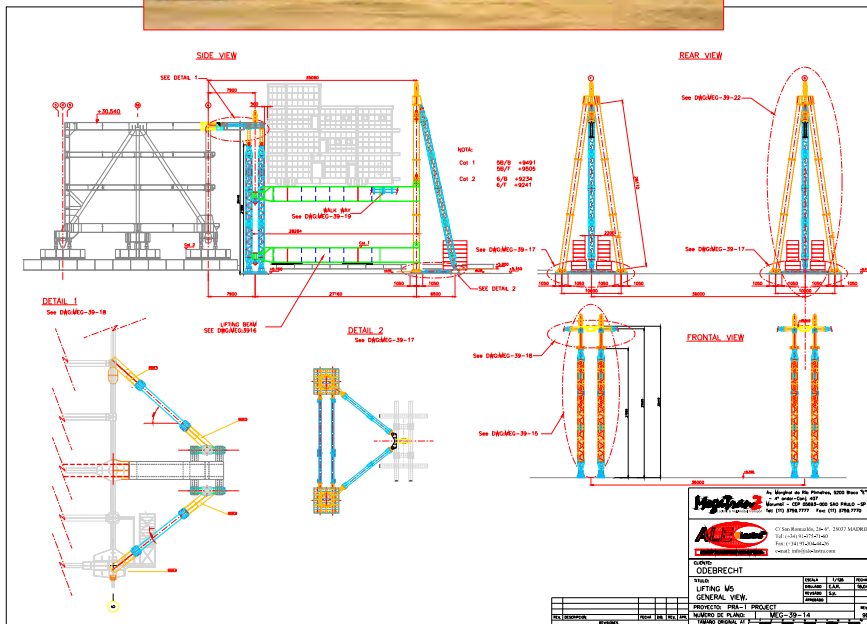
WORLDWIDE HEAVY TRANSPORTATION AND LIFTING

[WWW.ALE-HEAVYLIFT.COM](http://WWW.ALE-HEAVYLIFT.COM)

**ALE**   
SMARTER, SAFER, STRONGER



# BRAZIL



- Installation of the Living Quarter Module, Project PRA-1
- Weight: 1,350 tonnes
- Year 2006
- Location: San Roque, Salvador de Bahia

# CHILE



- **Transport on SPMT of several Crushers (max weight 1240T), silos and conveyor belt sections**
- **Location: several mines in the Andres Mountains**
- **Year: 2011, 2003, 2006**



# COLOMBIA

- Transport of a boiler weighing 140 Te.
- Year: 2010
- LOCATION: Barranquilla



# COLOMBIA

- Transport of several blast furnace parts.
- Year: 2011
- LOCATION: Cerro Matoso



WORLDWIDE HEAVY TRANSPORTATION AND LIFTING

[WWW.ALE-HEAVYLIFT.COM](http://WWW.ALE-HEAVYLIFT.COM)

**ALE**   
SMARTER, SAFER, STRONGER

# COLOMBIA

- Transport of several blast furnace parts.
- Year: 2011
- LOCATION: Cerro Matoso



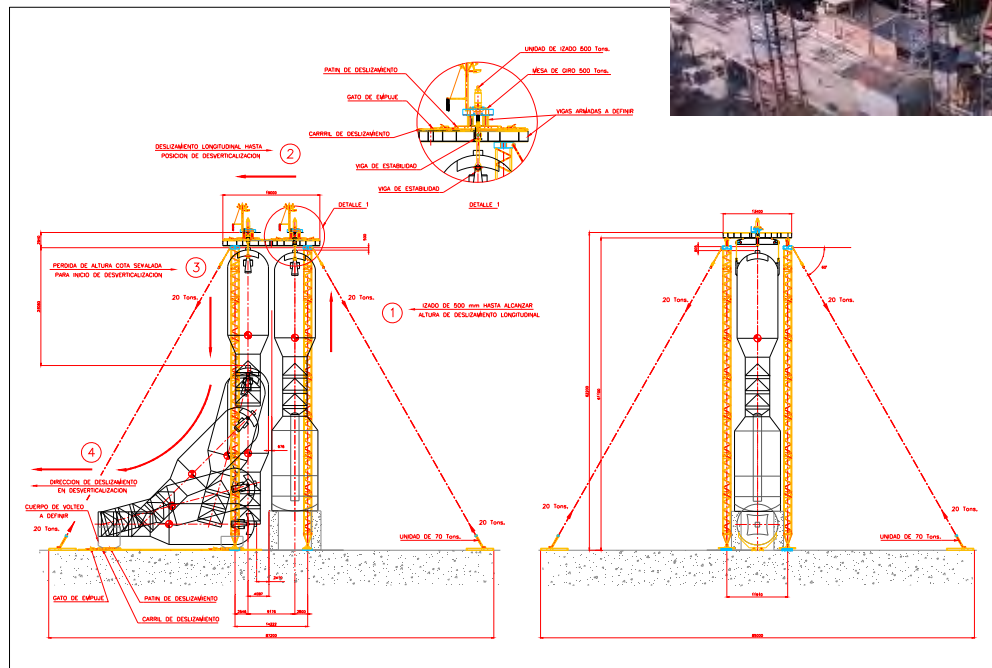
WORLDWIDE HEAVY TRANSPORTATION AND LIFTING

[WWW.ALE-HEAVYLIFT.COM](http://WWW.ALE-HEAVYLIFT.COM)

**ALE**   
SMARTER, SAFER, STRONGER

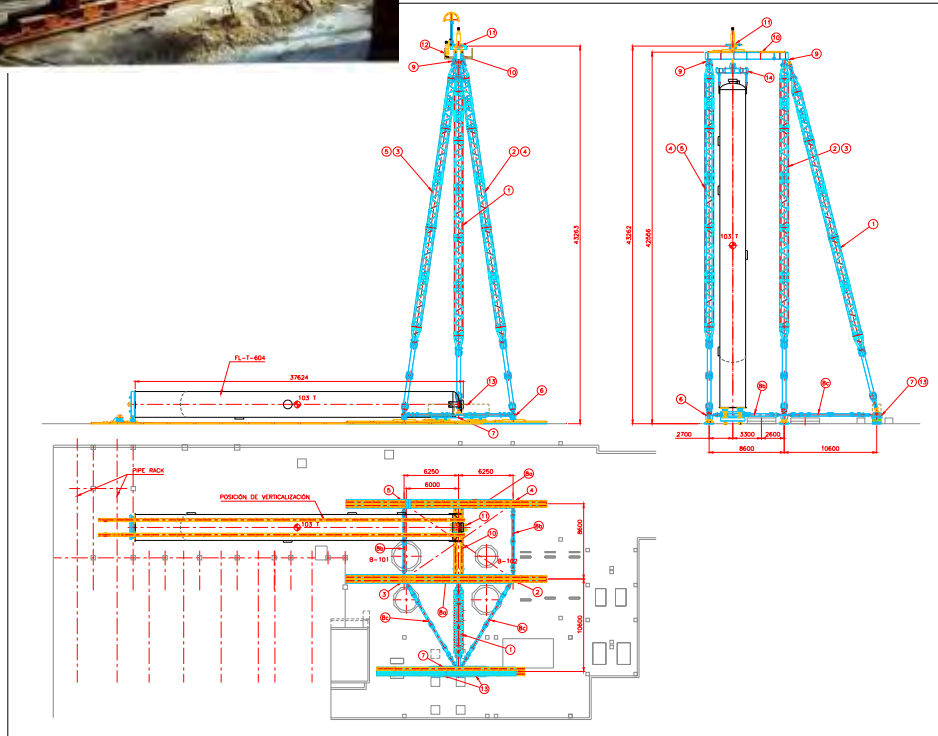
# COLOMBIA

- Replacement of an Orthoflow reactor (180Te)
- Year: 1998
- LOCATION: Barrancabermeja



# COLOMBIA

- Lifting of two splitter reactors
- Year: 1999
- Weight of reactors: 110 & 70 tonnes
- LOCATION: Cartagena de Indias



# ECUADOR

- Transport and installation of gas turbine and generator
- Weights: Turbine 89Te and generator 133Te
- Year: 2001
- LOCATION: Machala Power Plant



WORLDWIDE HEAVY TRANSPORTATION AND LIFTING

[WWW.ALE-HEAVYLIFT.COM](http://WWW.ALE-HEAVYLIFT.COM)



SMARTER, SAFER, STRONGER



# MEXICO

- Load-out of different offshore structures
- Year: 2003
- Location: Tuxpan



**TRIPOD 350Te**



**BRIDGE 320Te**

# MEXICO

- Load-out of different offshore structures
- Year: 2003
- Location: Tuxpan



**BRIDGE 320Te**



**DLM 320Te**

# MEXICO

- Load-out of different offshore structures
- Year: 2003
- Location: Tuxpan



**FLAMING TOWER 130Te**

# MEXICO



- **Load-out of DLM structures**  
**Project PB-KU-H**
- **Maximum weight: 400Te.**
- **Year: 2007**

**Location: Tampico**



WORLDWIDE HEAVY TRANSPORTATION AND LIFTING

[WWW.ALE-HEAVYLIFT.COM](http://WWW.ALE-HEAVYLIFT.COM)



SMARTER, SAFER, STRONGER

# MEXICO



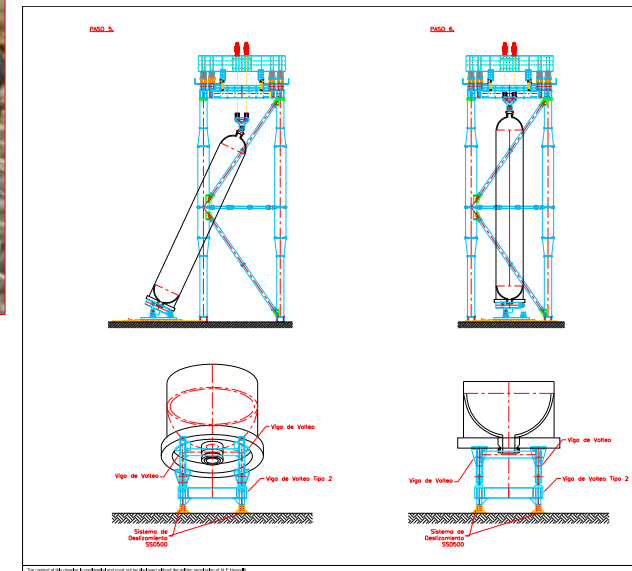
- Transport reactor from Coatzacoalcos harbour to Minatitlan.
- Dimensions and weight: 30m long, 5m diameter and 432Te.
- Year: 2007



# MEXICO



- **Lifting of the R-11001 Reactor at General Lazaro Cardenas Refinery**
- **Dimensions and weight: 40 m long and 1,261 Te**
- **Year: 2007      Location: Minatitlan**



# MEXICO

## REPOTENTIATION LAGUNA VERDE NUCLEAR POWER PLANT

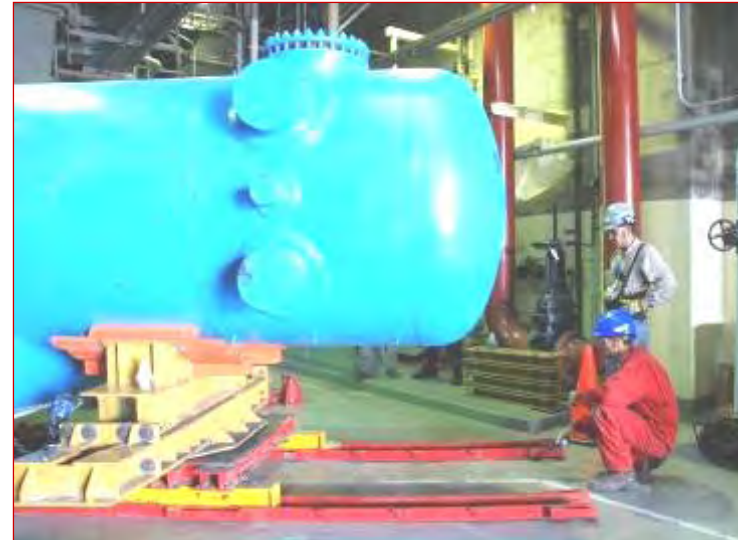


- Transport of 2 MSR's
- Weight per MSR: 170Te
- Year: 2008
- Location: From Tampico to Veracruz.



# MEXICO

## REPOTENTIATION LAGUNA VERDE NUCLEAR POWER PLANT



- Replacement of heaters
- Weight per heater: 80Te
- Year: 2008
- Location: Veracruz



WORLDWIDE HEAVY TRANSPORTATION AND LIFTING

[WWW.ALE-HEAVYLIFT.COM](http://WWW.ALE-HEAVYLIFT.COM)



SMARTER, SAFER, STRONGER



# MEXICO



- Transport of 52 pieces for windmills.
- Maximum weight: 50 Te
- Year: 2009
- Location: Oaxaca

# MEXICO

- Transport of pipe racks.
- Year: 2009
- Location: Tampico



WORLDWIDE HEAVY TRANSPORTATION AND LIFTING

[WWW.ALE-HEAVYLIFT.COM](http://WWW.ALE-HEAVYLIFT.COM)

**ALE**   
SMARTER, SAFER, STRONGER

# MEXICO



- Load-out different structures project PM-1
- Maximum weight: jacket 480 Te.
- Year: 2009 Location: Tampico

WORLDWIDE HEAVY TRANSPORTATION AND LIFTING

[WWW.ALE-HEAVYLIFT.COM](http://WWW.ALE-HEAVYLIFT.COM)



SMARTER, SAFER, STRONGER

# MEXICO



- Transport of steam and gas generators
- Maximum weight: 277 T
- Year: 2006
- Location: San Luis Potosí

# MEXICO



- Transport of boiler modules
- Maximum weight: 250 T
- Year:2009
- Location:Tampico



WORLDWIDE HEAVY TRANSPORTATION AND LIFTING

WWW.ALE-HEAVYLIFT.COM



SMARTER, SAFER, STRONGER

# MEXICO



- **Transport of beams**
- **Maximum weight: 100T**
- **Year:2009**
- **Location:Texcoco**

# MEXICO



- Load-out of a pontoon
- Maximum weight: 1,050T
- Year:2010
- Location:Tampico



WORLDWIDE HEAVY TRANSPORTATION AND LIFTING

[WWW.ALE-HEAVYLIFT.COM](http://WWW.ALE-HEAVYLIFT.COM)



SMARTER, SAFER, STRONGER

# MEXICO



- **Transport of client's lifting platform structure.**
- **Year: 2010**
- **Location: Tampico**



# VENEZUELA

- Installation of 4 Coke Drums. Sincor Project.
- Weight :340 tonnes
- Year: 1994
- Location: Barcelona



WORLDWIDE HEAVY TRANSPORTATION AND LIFTING

[WWW.ALE-HEAVYLIFT.COM](http://WWW.ALE-HEAVYLIFT.COM)



SMARTER, SAFER, STRONGER

# VENEZUELA

## EXPANSION OF FCC CARDÓN UNIT “TRANSPORT AND HEAVY LIFTING”



**OLD REACTOR 360 Te**

WORLDWIDE HEAVY TRANSPORTATION AND LIFTING

[WWW.ALE-HEAVYLIFT.COM](http://WWW.ALE-HEAVYLIFT.COM)

**ALE**   
SMARTER, SAFER, STRONGER

# VENEZUELA

## EXPANSION OF FCC CARDÓN UNIT “TRANSPORT AND HEAVY LIFTING”



**OLD DOMO 375 Te**



WORLDWIDE HEAVY TRANSPORTATION AND LIFTING

[WWW.ALE-HEAVYLIFT.COM](http://WWW.ALE-HEAVYLIFT.COM)

**ALE**   
SMARTER, SAFER, STRONGER

# VENEZUELA

## EXPANSION OF FCC CARDÓN UNIT “TRANSPORT AND HEAVY LIFTING”



WORLDWIDE HEAVY TRANSPORTATION AND LIFTING

[WWW.ALE-HEAVYLIFT.COM](http://WWW.ALE-HEAVYLIFT.COM)



SMARTER, SAFER, STRONGER

# VENEZUELA

## EXPANSION OF FCC CARDÓN UNIT “TRANSPORT AND HEAVY LIFTING”



OLD FRACTIONER 370 Te



WORLDWIDE HEAVY TRANSPORTATION AND LIFTING

[WWW.ALE-HEAVYLIFT.COM](http://WWW.ALE-HEAVYLIFT.COM)

**ALE**   
SMARTER, SAFER, STRONGER

# VENEZUELA

## EXPANSION OF FCC CARDÓN UNIT “TRANSPORT AND HEAVY LIFTING”



**NEW ABSORBER 315 Te**



WORLDWIDE HEAVY TRANSPORTATION AND LIFTING

[WWW.ALE-HEAVYLIFT.COM](http://WWW.ALE-HEAVYLIFT.COM)

**ALE**   
SMARTER, SAFER, STRONGER

# VENEZUELA

## EXPANSION OF FCC CARDÓN UNIT “TRANSPORT AND HEAVY LIFTING”



**NEW DOMO 400 Te**



WORLDWIDE HEAVY TRANSPORTATION AND LIFTING

[WWW.ALE-HEAVYLIFT.COM](http://WWW.ALE-HEAVYLIFT.COM)



SMARTER, SAFER, STRONGER

# VENEZUELA

## EXPANSION OF FCC CARDÓN UNIT “TRANSPORT AND HEAVY LIFTING”



**TRANSPORT NEW REACTOR 510 Te**



# VENEZUELA

## EXPANSION OF FCC CARDÓN UNIT “TRANSPORT AND HEAVY LIFTING”

LIFTING NEW REACTOR 510 Te



WORLDWIDE HEAVY TRANSPORTATION AND LIFTING

[WWW.ALE-HEAVYLIFT.COM](http://WWW.ALE-HEAVYLIFT.COM)

**ALE**   
SMARTER, SAFER, STRONGER

# VENEZUELA

## UNLOADING, TRANSPOR AND INSTALLATION OF BOILER

- Ship to shore unload of a boiler weighing 140Te, 11m long, 6.5m wide and 8.5m high.
- Transport from harbour to Fertinitro Plant

061



WORLDWIDE HEAVY TRANSPORTATION AND LIFTING

[WWW.ALE-HEAVYLIFT.COM](http://WWW.ALE-HEAVYLIFT.COM)



SMARTER, SAFER, STRONGER

# VENEZUELA

## Unloading, transport , lifting and installation boiler

- Installation by means of a gantry system.
- Year of execution: 2010



# VENEZUELA

## Unloading, transport , lifting and installation boiler

- Installation by means of a gantry system.
- Year of execution: 2010



# OTHER COUNTRIES

- ALE has performed jobs in several other smaller countries of the region, such as Suriname and many of the Caribbean islands.

## Transport and installation of diesel engines



WORLDWIDE HEAVY TRANSPORTATION AND LIFTING

[WWW.ALE-HEAVYLIFT.COM](http://WWW.ALE-HEAVYLIFT.COM)

**ALE**   
SMARTER, SAFER, STRONGER